

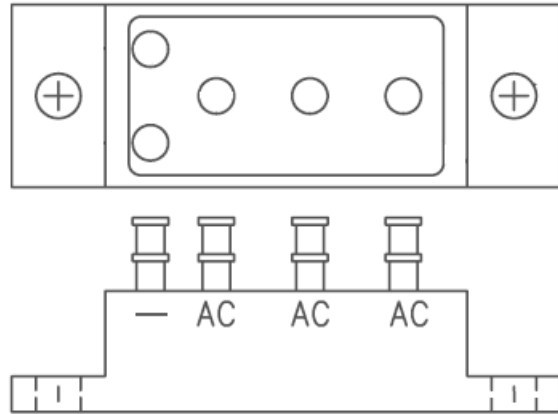


180 Lafayette Road
 North Hampton, NH 03862-2448
 PH: 603-964-3165
 FX: 603-964-3168
 WWW.PDEELECTRONICS.COM

Rectifier Assembly
 25 Amp Three Phase Bridge
 SC3B483-1, SC3B483-2, SC3B483-3

FEATURES

- High Reliability Screen Available
- Glass Passivated Diodes Utilized
- Controlled Avalanche Characteristics
- High Surge Rating
- Electrically Isolated Case
- Black Anodized Aluminum Case
- MIL-PRF-19500 Similarity



ABSOLUTE MAXIMUM RATINGS

Average DC Output Current ($T_c=55^\circ\text{C}$).....	25Amps
Average DC Output Current ($T_c=100^\circ\text{C}$).....	18.5Amps
Maximum Surge Current (8.3mS, half sine, $T_c=25^\circ\text{C}$).....	150 Amps
Storage and Operating Temperature.....	-65°C to $+150^\circ\text{C}$
Maximum Thermal Resistance (junction to case).....	2.5°C/W typical
Mounting Torque.....	15.0 in/lb max (6-32 Screw)
Weight.....	1.0 oz (30 g) typical

ELECTRICAL CHARACTERISTICS

Device	PIV Per Leg	Max Forward Voltage Per Leg $I_{FM}=39A$	Max Reverse Leakage Current Per Leg		Average Output Current		Max Reverse Recovery Time	Max Isolation Voltage
	Volt	Volt	μA		A		μS	μA
		$T_c = 25^\circ\text{C}$	$T_c = 25^\circ\text{C}$	$T_c = 100^\circ\text{C}$	$T_c = 55^\circ\text{C}$	$T_c = 100^\circ\text{C}$	$T_a = +25^\circ\text{C}$	$T_c = 25^\circ\text{C}$
SC3B483-1	200							
SC3B483-2	400	1.3*	2	200*	25	18.5	2.0**	10***
SC3B483-3	600							

*PW = 300 μ S, duty cycle \leq 2%

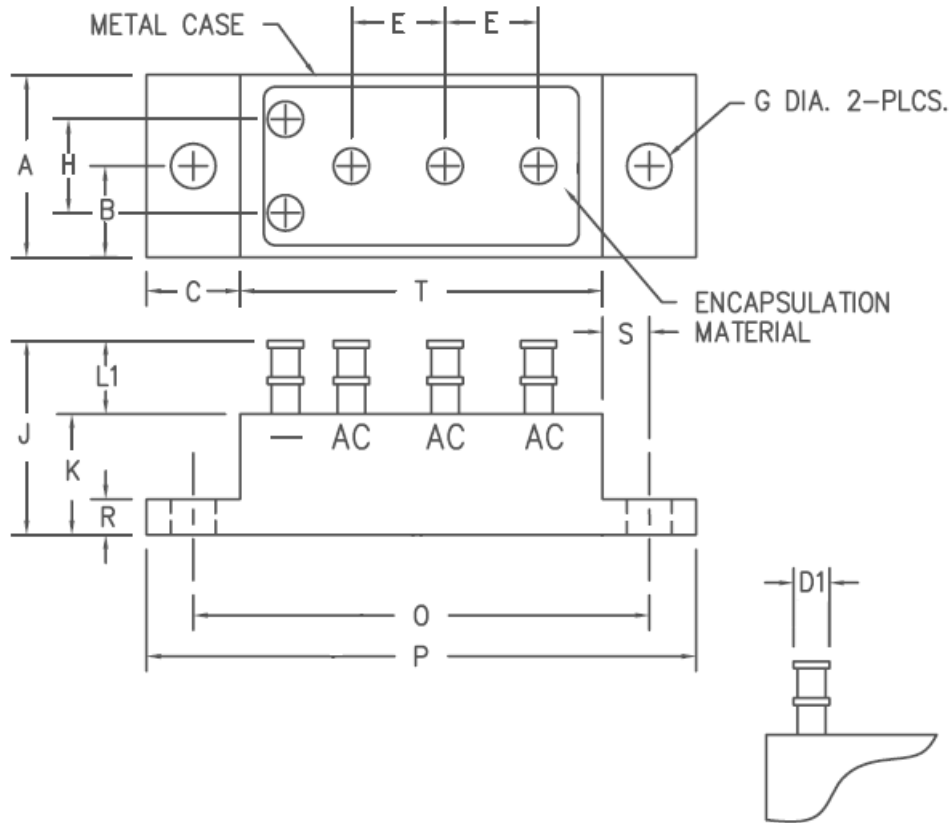
** $I_F=0.5A$, $I_R=1.0A$, $I_{rec}=0.25A$, measured on discretes prior to assembly

***Measured for 10 seconds minimum



180 Lafayette Road
 North Hampton, NH 03862-2448
 PH: 603-964-3165
 FX: 603-964-3168
 WWW.PDEELECTRONICS.COM

Rectifier Assembly
 25 Amp Three Phase Bridge
 SC3B483-1, SC3B483-2, SC3B483-3



Dim.	Inches		Notes
	Minimum	Maximum	
A	.730	.770	
B	.355	.395	
C	.355	.395	
D1	.141	.151	typical
E	.355	.395	
G	.149	.189	
H	.355	.395	
J	---	.820	
K	.390	.510	
L1	.240	.320	
O	1.84	1.90	
P	2.22	2.28	
R	.090	.150	
S	.168	.208	
T	1.47	1.53	

Specifications subject to change without notice to ensure a better product
PD&E Electronics 180 Lafayette Rd. North Hampton, NH 03862
 Ph: (603) 964-3165 Fx: (603) 964-3168 Web: WWW.PDEELECTRONICS.COM